

5. Submit a report to the Board of Regents, the legislative auditor, and the legislature containing certain organizational data, including but not limited to the following:

- a. Number of students by classification.**
- b. Number of instructional staff members.**
- c. Average class student-to-instructor ratio.**
- d. Average number of students per instructor.**
- e. Number of non-instructional staff members in academic colleges and departments.**
- f. Number of staff in administrative areas.**
- g. Organization chart containing all departments and personnel in the institution down to the second level of the organization below the president, chancellor, or equivalent position.**
- h. Salaries of all personnel identified in subparagraph (g) above and the date, amount, and type of all increases in salary received since June 30, 2008.**

Organizational Data

a. Number of students by classification.

	Fall 2010 Headcount		Total	2010-11 AY		Total FTE
	Undergraduate	Graduate		Undergrad FTE	Grad FTE	
LSU (incl Vet. Med)	23,686	5,085	28,771	23,982.0	4,751.9	28,733.9

b. Number of instructional staff members.

	Fall 2010	
	Instructional Faculty Headcount	Instructional Faculty FTE
LSU (incl Vet. Med)	1,268.0	1,157.2

c. Average class student-to-instructor ratio.

	2010-11 AY
LSU	36.9

l. Average number of students per instructor.

	2010-11 FTE enrollment per FTE instructor
LSU (incl Vet. Med)	24.8

Louisiana State University

5. **Organizational Data**
 e. **Number of non-instructional staff members in academic colleges and departments.**

FALL 2010

College of Agriculture		
Headcount		2
FTE		1.51
College of Art & Design		
Headcount		2
FTE		2.00
College of Arts & Sciences		
Headcount		3
FTE		3.00
College of Basic Sciences		
Headcount		1
FTE		1.00
Ourso College of Business		
Headcount		3
FTE		3.00
School of Coast & the Environment		
Headcount		1
FTE		1.00
College of Education		
Headcount		2
FTE		2.00
College of Engineering		
Headcount		1
FTE		1.00
Honors College		
Headcount		2
FTE		2.00
School of Library & Info Science		
Headcount		1
FTE		1.00
Manship School of Mass Communication		
Headcount		1
FTE		1.00
College of Music & Dramatic Arts		
Headcount		1
FTE		1.00
School of Social Work		
Headcount		1
FTE		1.00
School of Veterinary Medicine		
Headcount		4
FTE		4.00
TOTAL		
HEADCOUNT		25
FTE		24.51

Louisiana State University

5. Organizational Data

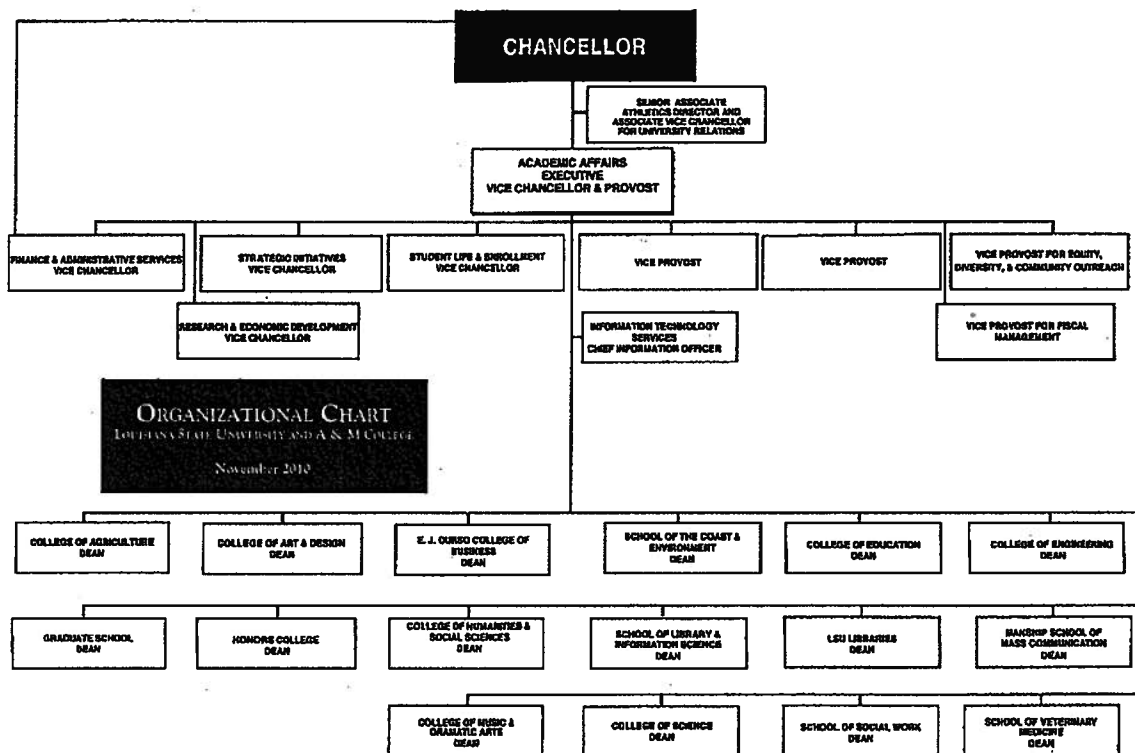
f. Number of staff in administrative areas.

Chancellor		
Headcount		5
FTE		5.00
Exec Vice Chancellor & Provost		
Academic Affairs		
Headcount		11
FTE		11.00
Vice Chancellor & Director, Athletic Department		
Headcount		2
FTE		2.00
Vice Chancellor & Chief Information Officer, Information Technology		
Headcount		6
FTE		6.00
Vice Chancellor, Finance & Administrative Services		
Headcount		9
FTE		9.00
Vice Chancellor, Research & Econ Development		
Headcount		9
FTE		8.54
Vice Chancellor, Strategic Initiatives		
Headcount		1
FTE		1
Vice Chancellor, Student Life		
Headcount		5
FTE		4.75
TOTAL		
HEADCOUNT		48
FTE		47.29

Louisiana State University

5. Organizational Data

- g. Organization chart containing all departments and personnel in the institution down to the second level of the organization below the president, chancellor, or equivalent position.



Louisiana State University

5. Organizational Data

h. Salaries of all personnel identified in subparagraph (g) above and the date, amount, and type of all increases in salary received since June 30, 2008.

Position	Salary as of		Increase		Reason		Increase		Reason
	Nov. 1, 2010		Date	Amount			Date	Amount	
Chancellor	\$400,000								
Executive Vice Chancellor and Provost	\$280,000		7/1/2010		Salary of previous incumbent was \$260,000.)				
Vice Chancellor and Director, Athletic Department	\$350,000								
Senior Associate Athletics Director and Associate Vice Chancellor for University Relations	\$172,000		7/30/2009	\$23,000	Expansion of Position		7/1/2010	\$12,000	Equity
Vice Chancellor/Chief Information Officer	\$233,999								
Vice Chancellor, Finance and Administrative Services	\$220,000				(New to position as of 8/1/2010. Salary of previous incumbent was \$205,005.)				
Vice Chancellor, Research and Economic Development					Vacant (Salary of previous incumbent was \$231,535.)				
Vice Chancellor, Strategic Initiatives	\$239,068								
Vice Chancellor, Student Life	\$200,000				(New VC hired 4/13/2010. Salary of previous incumbent was \$192,605.)				
Vice Provost for Equity, Diversity, and Community Outreach	\$166,000		10/1/2009	\$25,590	Equity				
Vice Provost	\$192,932								
Vice Provost	\$140,000				(New to position as of 8/16/2010. Salary of previous incumbent was \$250,983.)				
Vice Provost for Fiscal Management	\$194,655								
Dean, College of Agriculture	\$121,103								
Dean, College of Art and Design					Vacant (Salary of previous incumbent was \$185,191.)				
Dean, Ourso College of Business	\$299,999								
Dean, School of the Coast and Environment	\$200,000								
Dean, College of Education					Vacant (Salary of previous incumbent was \$168,145.)				
Dean, College of Engineering	\$275,000								
Dean, Graduate School	\$177,959				(New to position as of 6/1/2010. Salary of previous incumbent was \$190,000.)				
Dean, Honors College	\$150,451								
Dean, College of Humanities & Social Sciences					Vacant (Salary of previous incumbent was \$176,363.)				
Dean, LSU Libraries	\$169,823								
Dean, School of Library and Information Science	\$116,049								
Dean, Manship School of Mass Communication					Vacant (Salary of previous incumbent was \$225,876.)				
Dean, College of Music and Dramatic Arts	\$200,000								
Dean, College of Science	\$207,735								
Dean, School of Social Work	\$159,640								
Dean, School of Veterinary Medicine	\$235,560								