



NORTHEAST LOUISIANA
TECHNICAL COLLEGE

Northeast Louisiana Technical College

Section 5 Data Spring 2011

**609 Vocational Parkway
West Monroe, LA 71292
Dr. Luke Robins, Interim Regional Director**

Section 5:

a. Number of students by classification

- Headcount, undergraduate students and graduate/professional school students

Fall 2009 Headcount – Undergraduate – 2,585

Fall 2010 Headcount – Undergraduate – 1,834

- Annual FTE (full-time equivalent) undergraduate and graduate/professional school students

2009-10 Academic Year – Undergraduate FTE – 2,053

2010-11 Estimated Undergraduate FTE – 1,770

b. Number of instructional staff members

- Number and FTE instructional faculty

2009 Instructional Faculty Headcount – 119

2010 Instructional Faculty Headcount - 108

2009 Instructional Faculty FTE – 93

2010 Instructional Faculty FTE - 76

c. Average class student-to-instructor ratio

- Average undergraduate class size at the institution

2009 Average undergraduate class size – 7

2010 Average undergraduate class size - 7

d. Average number of students per instructor

- Ratio of FTE students to FTE instructional faculty

2009 Average number of students per instructor – 22

2010 Average number of students per instructor – 23

e. Number of non-instructional staff members in academic colleges and departments

- Number and FTE non-instructional staff members by academic college (or school, if that is the highest level of academic organization for some units)

2009 Number of non-instructional staff – 9

2010 Number of non-instructional staff – 9

f. Number and FTE of staff in administrative areas

- Number and FTE of staff as reported in areas other than the academic colleges/schools, reported by division

2009 Number of staff – 9

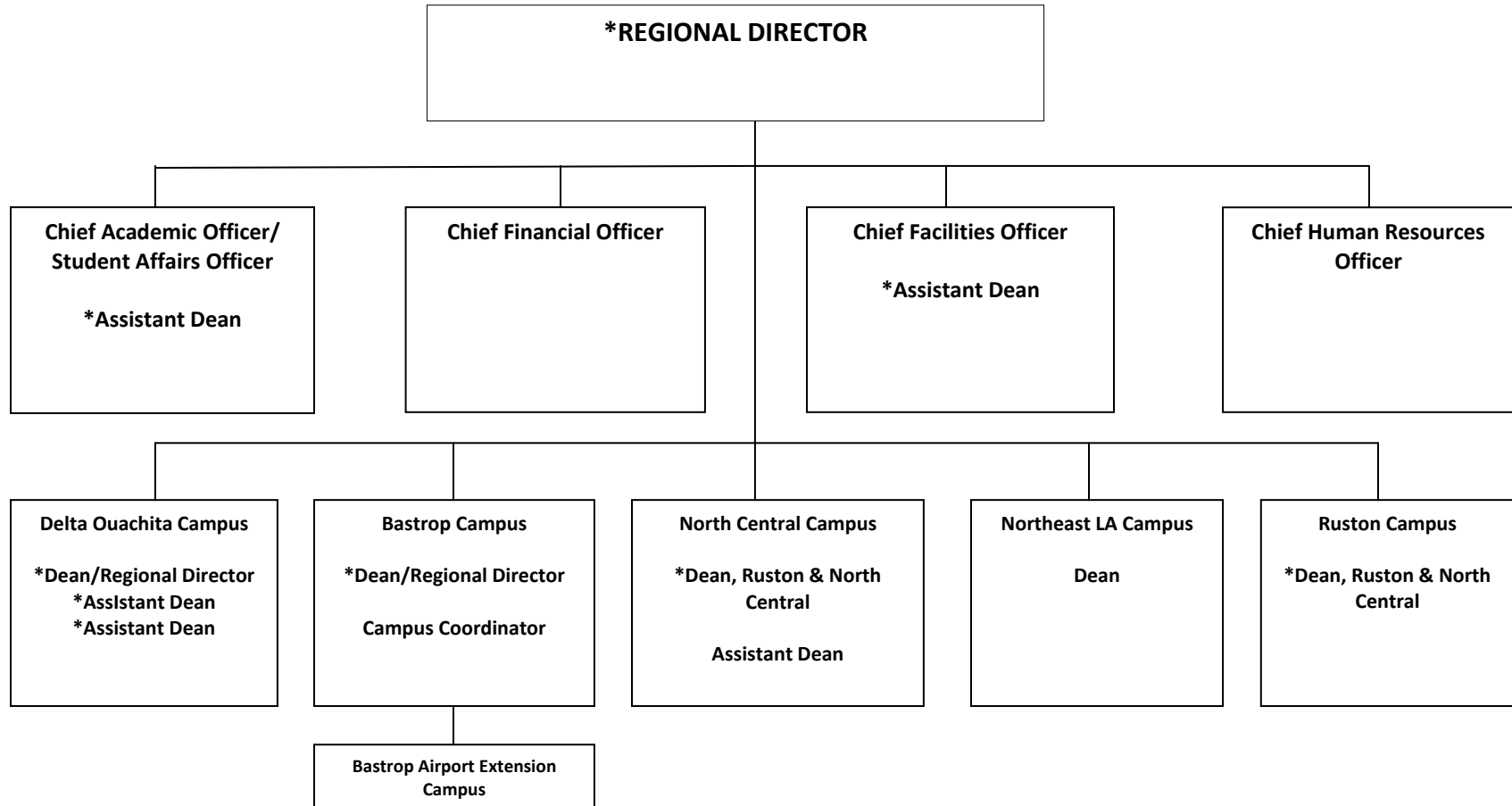
2010 Number of staff – 9

g. Organization chart containing all departments and personnel in the institution down to the second level of the organization below the president, chancellor, or equivalent position

NORTHEAST LOUISIANA TECHNICAL COLLEGE

Organization Chart

Revised 101110



***Denotes serving in dual capacity**

h. Salaries of all personnel identified in subparagraph (g) above and the date, amount, and type of all increases in salary received since June 30, 2008

Position	Total Base Salary, Fall 2009	Salary Changes Since 6/30/2008
Regional Director/ Dean for Delta Ouachita and Bastrop Campuses	113,263.80	From 108,907.50 on 7/1/08 for merit
Chief Academic Officer/Asst. Dean, Delta Ouachita	83,963.74	From 76,330.68 on 7/13/09 for addn. duties From 73,394.88 on 7/1/08 for merit
Chief Financial Officer	60,059.63	From 57,749.64 on 7/1/08 for merit
Chief Facilities/Safety Officer/Assistant Dean, Delta Ouachita	68,094.56	From 65,475.54 on 7/1/08 for merit
Chief Human Resources Officer	54,599.71	From 52,499.72 on 7/1/08 for merit
Campus Coordinator, Bastrop Campus	71,327.00	No change
Asst. Dean, North Central Campus	57,199.74	From 54,999.88 on 7/1/08 for adjustment
Dean, Northeast Campus	74,037.14	From 71,189.56 on 7/1/08 for merit
Dean, Ruston Campus and North Central Campus	69,999.80	No change