



---

LOUISIANA'S  
TEACHER  
QUALITY  
INITIATIVE

---

## Supporting Information: Technical Construction of Tables

### Conversion of Raw Scores to Scaled Scores for the Teacher Preparation Accountability System

The Conversion Table on the first three of the following pages was constructed using the raw and scaled score ranges for each quality indicator's table and the regression lines that best fit those data.

- Each quality indicator has its own page or two that was used to convert the raw and scaled score ranges to individual score conversions. They appear in this order:
  - Praxis Passage Rate
  - Quantity
  - Survey Scores.
- The raw and scaled score ranges are found in the first two columns of the table for that indicator.
- Those two columns were used to draw the graphs that appear to the right of the tables.
- Once the graphs were drawn, an equation was fit to the line that described each set of data in the first two columns best.
- Each equation was used to calculate the numbers in the third column.
  - Careful inspection of the conversion scores will confirm that although the tops and bottoms of the ranges for the different score levels are very close to the original numbers entered in the first two columns for each indicator, they are not exact. Given that the ranges were not originally designed so that scaled scores were a perfect linear function of the raw scores, there was some movement of the numbers at the tops and bottom of the ranges according to the line that best fit the data.
- The fourth column consists of the numbers from the third, rounded to the nearest whole number for ease of use within the final conversion table.
- The first and fourth columns appear in blue. These columns were used, as is, to create the final conversion table on the three pages that appear directly following this page.

### Conversion Table for Teacher Preparation Accountability System

grades	scaled scores	PRAXIS passage	QUANTITY	SURVEY
<b>A+ (Exemplary)</b>	140		21%	135
	139			
	138			134
	137		20%	
	136	100%		133
	135		19%	
	134			132
	133			
	132	99%	18%	131
	131			
	130		17%	130
	129			
	128	98%		
	127		16%	129
	126			
125		15%	128	
<b>A (High Performing)</b>	124	97%		
	123			127
	122		14%	
	121			126
	120	96%	13%	
	119			125
	118			
	117		12%	124
	116			
	115	95%	11%	123
	114			
	113			
	112		10%	122
	111	94%		
	110		9%	121
	109			
	108			120
	107	93%	8%	
	106			119
	105		7%	
104			118	
103	92%	6%		
102			117	
101				
100		5%		

### Conversion Table for Teacher Preparation Accountability System

<b>B (Satisfactory)</b>	99			116
	98	91%		
	97		4%	115
	96			
	95		3%	114
	94	90%		
	93			113
	92		2%	
	91			112
	90	89%	1%	
	89			111
	88		0%	
	87			110
	86	88%		
	85		-1%	
	84			109
	83		-2%	
	82	87%		108
81				
80		-3%	107	
<b>C (At-Risk)</b>	79			
	78		-4%	106
	77	86%		
	76			105
	75		-5%	
	74			104
	73	85%	-6%	
	72			103
	71			
	70		-7%	
	69	84%		102
	68		-8%	
	67			101
	66			
	65	83%	-9%	100
	64			
	63		-10%	99
	62			
	61			98
	60	82%	-11%	
59			97	
58		-12%		
57			96	
56	81%			
55		-13%		
54			95	
53		-14%		
52	80%		94	
51				
50		-15%	93	

# Conversion Table for Teacher Preparation Accountability System

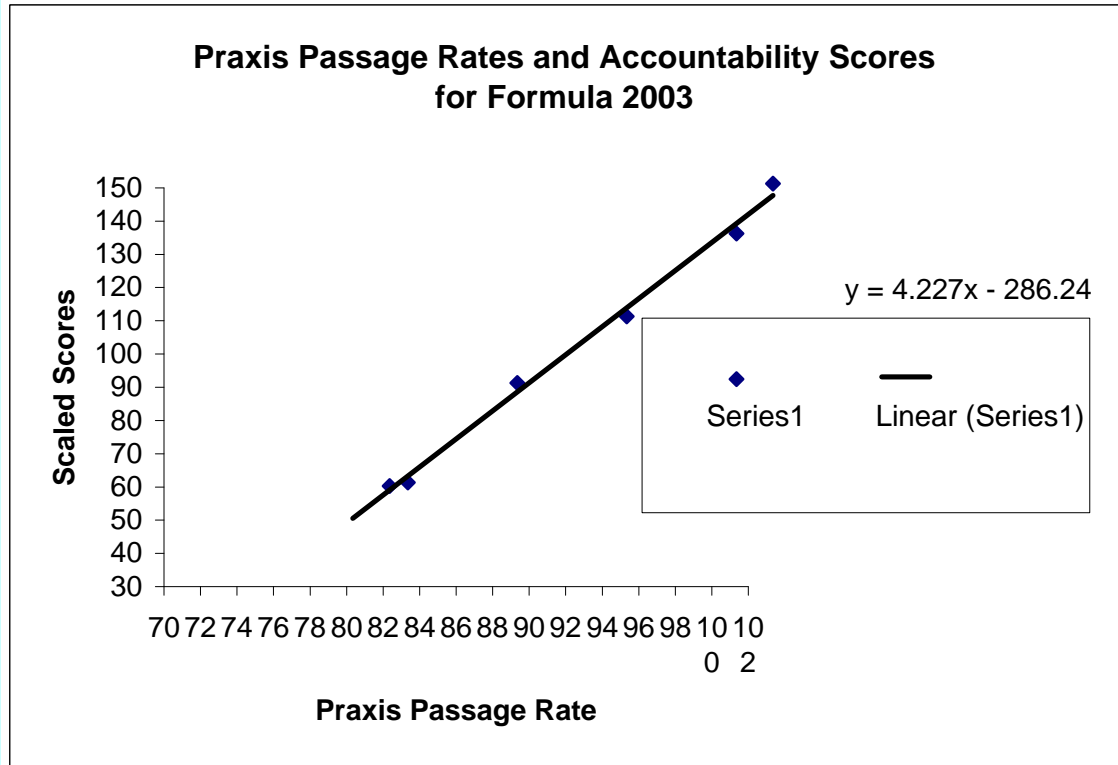
<b>Below C (Low Performing)</b>	49			
	48	79%	-16%	92
	47			
	46			91
	45		-17%	
	44			90
	43	78%	-18%	
	42			89
	41			
	40		-19%	
	39	77%		88
	38		-20%	
	37			87
	36			
	35	76%	-21%	86
	34			
	33		-22%	85
	32			
	31	75%		84
	30		-23%	
	29			83
	28		-24%	
	27	74%		82
	26			
	25		-25%	
	24			81
	23		-26%	
	22	73%		80
	21			
	20		-27%	79
	19			
	18	72%	-28%	78
	17			
	16			77
	15		-29%	
	14	71%		76
	13		-30%	
	12			
	11			75
	10	70%	-31%	
	9			74
	8		-32%	
	7			73
	6			
	5	69%	-33%	72
	4			
	3		-34%	71
	2			
	1	68%		70
	0		-35%	

## PRAXIS PASSAGE RATE CONVERSION

Raw % Passage PRAXIS	Scaled Score from Table with Ranges	scaled score using formula	rounded to nearest whole number
100	140	136.46	136
99		132.233	132
98	125	128.006	128
97		123.779	124
96		119.552	120
95		115.325	115
94		111.098	111
93		106.871	107
92	100	102.644	103
91		98.417	98
90		94.19	94
89		89.963	90
88		85.736	86
87		81.509	82
86	80	77.282	77
85		73.055	73
84		68.828	69
83		64.601	65
82		60.374	60
81		56.147	56
80	50	51.92	52
79	49	47.693	48
78		43.466	43
77		39.239	39
76		35.012	35
75		30.785	31
74		26.558	27
73		22.331	22
72		18.104	18
71		13.877	14
70		9.65	10
69		5.423	5
68		1.196	1

**FORMULA**

scaled score = (4.227 x raw score) - 286.24

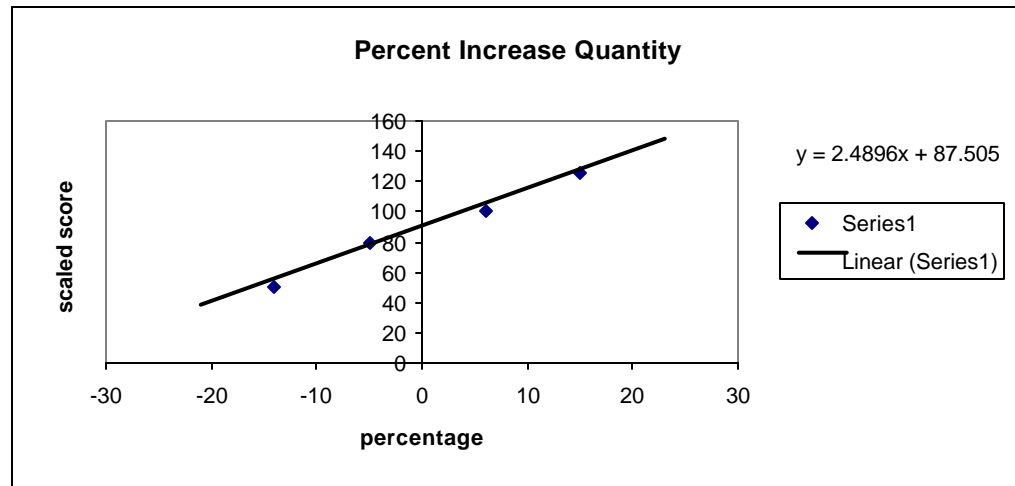


## QUANTITY INCREASE CONVERSION

Increase in Quantity over baseline	Scaled Score from Table with Ranges	scaled score using formula	rounded to nearest whole number
22		142.2762	142
21		139.7866	140
20		137.297	137
19		134.8074	135
18		132.3178	132
17		129.8282	130
16		127.3386	127
15	125	124.849	125
14		122.3594	122
13		119.8698	120
12		117.3802	117
11		114.8906	115
10		112.401	112
9		109.9114	110
8		107.4218	107
7		104.9322	105
6	100	102.4426	102
5		99.953	100
4		97.4634	97
3		94.9738	95
2		92.4842	92
1		89.9946	90
0		87.505	88
-1		85.0154	85
-2		82.5258	83
-3		80.0362	80
-4		77.5466	78
-5	80	75.057	75
-6		72.5674	73
-7		70.0778	70
-8		67.5882	68

**FORMULA**

**scaled score = (2.4896 x raw score) + 87.505**



## QUANTITY INCREASE CONVERSION

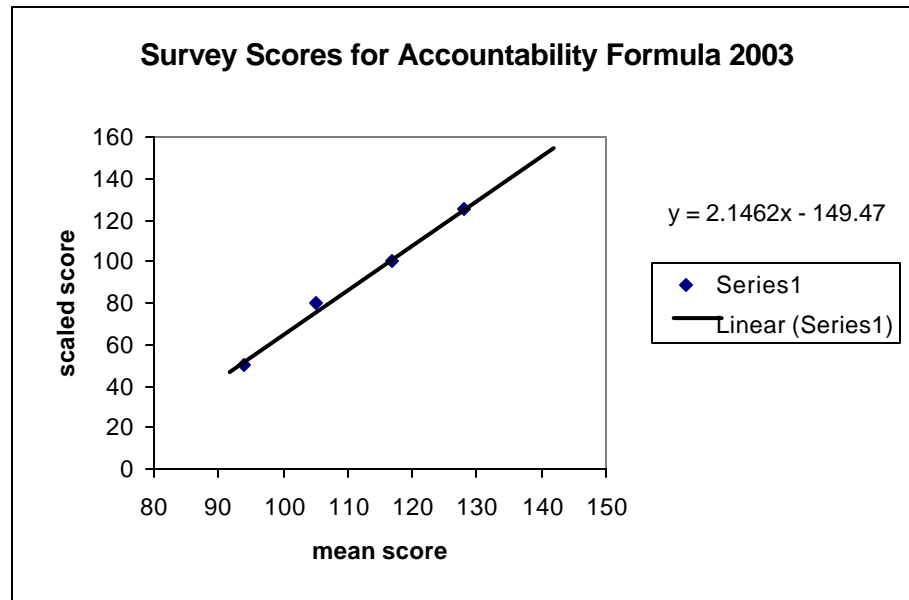
-9	65.0986	65
-10	62.609	63
-11	60.1194	60
-12	57.6298	58
-13	55.1402	55
-14	52.6506	53
-15	50.161	50
-16	47.6714	48
-17	45.1818	45
-18	42.6922	43
-19	40.2026	40
-20	37.713	38
-21	35.2234	35
-22	32.7338	33
-23	30.2442	30
-24	27.7546	28
-25	25.265	25
-26	22.7754	23
-27	20.2858	20
-28	17.7962	18
-29	15.3066	15
-30	12.817	13
-31	10.3274	10
-32	7.8378	8
-33	5.3482	5
-34	2.8586	3
-35	0.369	0

## SURVEY SCORE CONVERSION

Mean Survey Score	Scaled Score from Table with Ranges	scaled score using formula	rounded to nearest whole number
140		150.998	151
139		148.8518	149
138		146.7056	147
137		144.5594	145
136		142.4132	142
135		140.267	140
134		138.1208	138
133		135.9746	136
132		133.8284	134
131		131.6822	132
130		129.536	130
129		127.3898	127
128	125	125.2436	125
127		123.0974	123
126		120.9512	121
125		118.805	119
124		116.6588	117
123		114.5126	115
122		112.3664	112
121		110.2202	110
120		108.074	108
119		105.9278	106
118		103.7816	104
117	100	101.6354	102
116		99.4892	99
115		97.343	97
114		95.1968	95
113		93.0506	93
112		90.9044	91
111		88.7582	89
110		86.612	87
109		84.4658	84
108		82.3196	82
107		80.1734	80
106		78.0272	78

### FORMULA

$$\text{scaled score} = (2.1462 \times \text{raw score}) - 149.47$$





## SURVEY SCORE CONVERSION

105	80	75.881	76
104		73.7348	74
103		71.5886	72
102		69.4424	69
101		67.2962	67
100		65.15	65
99		63.0038	63
98		60.8576	61
97		58.7114	59
96		56.5652	57
95		54.419	54
94	50	52.2728	52
93		50.1266	50
92		47.9804	48
91		45.8342	46
90		43.688	44
89		41.5418	42
88		39.3956	39
87		37.2494	37
86		35.1032	35
85		32.957	33
84		30.8108	31
83		28.6646	29
82		26.5184	27
81		24.3722	24
80		22.226	22
79		20.0798	20
78		17.9336	18
77		15.7874	16
76		13.6412	14
75		11.495	11
74		9.3488	9
73		7.2026	7
72		5.0564	5
71		2.9102	3
70		0.764	1
69			
68			